

# Norgesdekk introduserer **MAGNA TYRES**

Topp moderne dekk opp mot premium kvalitet,  
men til en betydelig lavere pris.





# Magna ?

Yes, our name is massive, and so is our service, product line, and commitment.

We have become a large player in the OTR tyre industry.

But most importantly, even though we are a company with over 500 people operating in all continents, we still operate like a family business. The way we started in 2006.

And we think that's huge.

That makes us Magna.

**Always.**



# It all starts with a dream.



Magna Tyres founded in 2006 as vertical spin-off of a leading compound manufacturer.



Specialised in compounds for OTR & industrial tyres.



Specialised in rubber compounds for OTR & Industrial tyres for over 40 years.



# The rubber quality makes the difference.



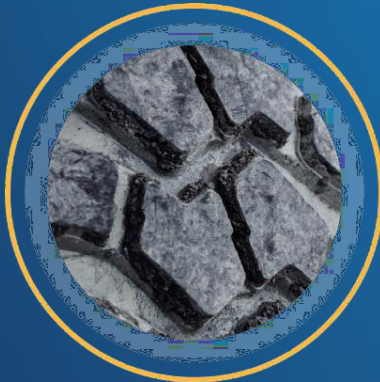
Magna Tyres makes the difference with our rubber compound.



Production management & quality control by own Magna supervisors.



Use of own Magna rubber compounds, moulds & building machinery.



Magna compounds produced in mixing facilities in the Netherlands.



Advanced testing & modelling techniques optimising our tyre designs and compounds.





# The journey continues.



**2006**

Magna Tyres was founded in 2006 in the Netherlands



**2015**

Magna Tyres moved to a new location



**2020**

A brand new headquarters & warehouse. In the Netherlands



130+  
active countries.



40+ years  
experience in rubber  
compound.



500+  
employees.



+45  
Net Promoter Score.



16 offices  
worldwide.



# Always.



## Mission

We keep companies on the move with the best tyre solutions. Always. No matter where in the world, our customers can rely on our superior service and knowledge about Off-The-Road tyres every day. We embrace every opportunity to get you going and get the job done.

## Vision

Our main goal is to strengthen our position in the world as a 2nd-tier supplier of Off-The-Road tyres. We continue to expand our local presence and the number of valuable partnerships around the world.



# Brand values.



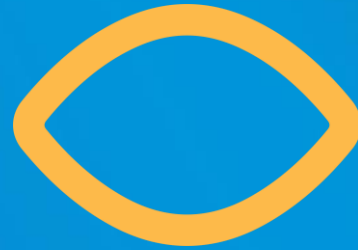
## Flexible

We have the power to make quick decisions and take actions.



## Human

We are a family-owned company which focus on OTR tyres, but we know people make the business.



## Focus

Producing (large) tyres is our core business. It's our passion and we know all about it.



## Value for money

We are challenging tier 1 brands on quality, but for a lower price.

# Internal values.



## We stay curious

We always want to know what our (internal) customers really want. Continually improving our product- and industry knowledge is part of our DNA.



## We love to say yes

We encourage people to do what's best for our customer. In other words, make your own choices and quick decisions every time it refers both to the external & internal customer. An internal customer is someone who depends on the outcome of your work.



## We take ownership

We hold ourselves responsible for the end result and never stop trying to improve our work. There's only one way, the right way. The (internal) customer accepts nothing less.



## We are in it together

Looking after each other, creating a safe and friendly environment where everyone is respected regardless of their background. Supporting our colleagues, clients and partners wherever and whenever we can.



# Global footprint.



## Europe

Magna Tyres Headquarters  
Magna Tyres Germany  
Magna Tyres Poland  
Magna Tyres Czech  
Industra Ltd. - Poland  
Magna Tyres Balkan

## Africa

Magna Tyres South Africa  
Tirepoint – South Africa

## Middle East

Magna Tyres Middle East & Africa

## Asia & Oceania

Magna Tyres Korea  
Magna Tyres Asia  
Magna Tyres Technical Service  
Magna Tyres Singapore  
Magna Tyres India  
Fennell Tyres International - AUS

## North America

Magna Tyres Canada  
Magna Tyres USA

## South America

Magna Tyres Chile

## Production facilities

Thailand  
Taiwan  
China  
Vietnam  
India  
Sri Lanka



# What sets us apart from the rest?

Personal approach - Business is People

Strong cooperation with Distributors, Dealers and OE manufacturers.

A reliable partner in a “NO-NONSENSE” and a straight way of working environment .

Product of Holland– Engineered & Produced by European technology.

Quality is key: Standard 5 year warranty.



# Trusted by OEM.

KONECRANES®



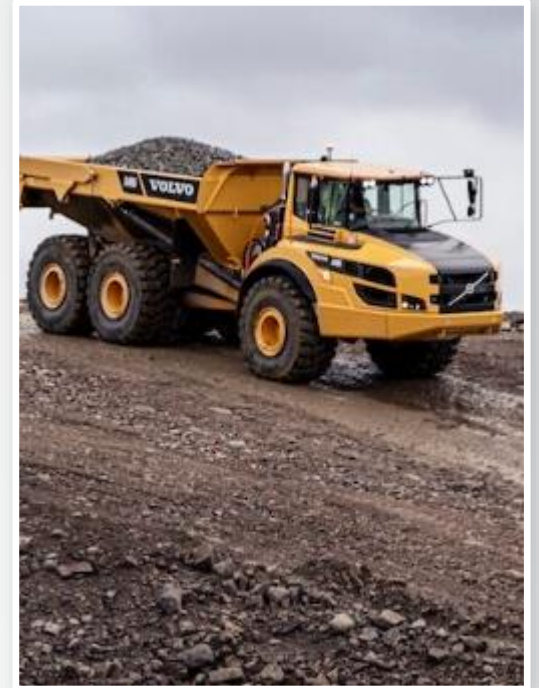
LIEBHERR



SENBOGEN



VOLVO





# Trusted by OEM.



**VOLVO**

 **KALMAR**

**COMBiLiFT**  
LiFTING INNOVATION

**LIEBHERR**

 **FUCHS**  
A TEREX BRAND

**Goldhofer**

**HOUCON** 

DUTCH LANKA TRAILERS®

**buisca**  
CARGO SOLUTIONS

**KAMAG**

 **VERIERI**  
S.P.A.

 **GAUSSIN**  
MANUGISTIQUE®

 **TERBERG**

**kühn**

**LOCATELLI**  
CRANE

**BELL**

**TLD**  
LOCAL SUPPORT, TOTAL COMMITMENT

**COLMAR**

 **MANTSINEN**

**BOAT  
LIFT**

 **Seacom**

 **KIROW**

**ncnielsen**



**ING BONFIGLIOLI**

**TABARELLI**

 **MAGNA**  
TYRES Always.

# Our product segments.



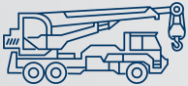
Mining & Earthmoving



Port & Terminal Handling



Construction



Mobile Crane



Solid tyre lifting equipment



Truck & Trailer



Magna TPMS



# Mining & Earthmoving tyres.





# Mining & Earthmoving tyres.



**MA01+** E3/L3  
17.5R25 26.5R25  
20.5R25 29.5R25  
23.5R25



**MA02** E3+/L3+  
23.5R25  
26.5R25  
29.5R25



**MA02+** E3+/L3+  
750/65R25  
875/65R29



**MA02F** E3+/L3+  
29.5R29  
33.25R29  
37.5R35



**M-TERRAIN** E4/L4  
20.5R25 29.5R25  
23.5R25 750/65R25  
26.5R25 875/65R29



**M-TERRAIN+** E4/L4  
775/65R29



**MA04+** E4  
14.00R25 21.00R33  
16.00R25 21.00R35  
18.00R25 24.00R35  
18.00R33



**MA04 GIANT** E4  
27.00R49 46/90R57  
33.00R51 50/80R57  
37.00R57 59/80R63  
40.00R57



**M-RIGID** E4  
27.00R49  
33.00R51



**MA09+** E4  
30.00R51  
36.00R51



**MB450** L4  
17.5-25



**MA05** L5  
17.5R25  
26.5R25  
29.5R25



**MA07+** L5  
35/65R33



**MA08** L4/L5  
17.5R25 26.5R25  
20.5R25 29.5R29  
23.5R25 35/65R33



**MA60** E3/L3  
800/80R29



**MA10+** L5  
15.5R25 23.5R25  
17.5R25 26.5R25  
20.5R25 29.5R25



**M-DESERT** E7  
21.00-25  
29.5-25



**MB10** L5  
20.5-25  
23.5-25  
26.5-25



**M-SNOW** G2/L2  
17.5R25  
20.5R25  
23.5R25



# Underground Mining tyres.



**MU25** E4/L4

29.5R29  
35/65R33



**MU30** E4/L4

26.5R25  
29.5R25



**MA05S** L5S

17.5R25 29.5R25  
18.00R25 29.5R29  
26.5R25 35/65R33



**MB05S** L5S

10.00-20 18.00-25  
12.00-20 17.5-25  
12.00-24 26.5-25  
14.00-24

# Mobile Crane tyres.

## MA03

385/95R24  
385/95R25  
445/95R25  
525/80R25  
505/95R25

## MA03+

385/95R25  
445/95R25





# Pneumatic Industrial tyres.



# Pneumatic Industrial tyres.



**MB01** IND-3 /IND-4  
16.00-25 18.00-33  
21.00-25 21.00-35



**MB01S** IND-4  
18.00-25



**MB02** IND-3 / IND-4  
11.00-20 18.00-25  
12.00-24 18.00-33  
14.00-24



**MB800**  
5.00-8 8.25-15 300-15  
6.00-9 28x9-15 12.00-20  
6.50-10 250-15 12.00-20  
7.00-12



**MB300** IND-3  
14.00-24



**M-TERMINAL**  
280/75R22.5  
310/80R22.5



**MR800+**  
9.00R20 14.00R24  
10.00R20 16.00R25  
11.00R20 18.00R25  
12.00R20 18.00R33  
12.00R24



**M-STRADDLE** IND-3  
16.00R25



**M-STRADDLE+** IND-3  
16.00R25  
480/95R25



**M-SACKER** IND-4  
18.00-25



**M-SACKER+** IND-4  
18.00-25



**MB300+** IND-3  
14.00-24



# Solid Superelastic tyres





# Solid Superelastic industrial tyres.



**MA601**

17.5-25 26.5-25  
20.5-25 29.5-25  
23.5-25 35/65-33



**MA600**

16.00-25 23.5-25  
18.00-25 26.5-25  
20.5-25



**MA902**

17.5-25 23.5-25  
20.5-25 26.5-25



**MA608 twin wheel**

10.00-20 14.00-24  
12.00-20 14.00-25  
12.00-24



**NEW**

**M-Telesolid**

315/95-28  
360/85-28



**MA608S**

10.00-20  
11.00-20



**MA801**

31x10-16  
31x10-20  
33x12-20  
36x14-20



**MA802**

13.00-24



**NEW**

**MA610 Pro3 Forklift solid tyres**

Range from 8 to 24 inch

# Superelastic MA610 forklift tyre range .



Sizes from  
**8 to 24 inch**

Also available in  
**“Non Marking”**

Also available in  
**“QuickFit”** version

## Carbon Neutral Production.

Revolutionise your logistical movements with our carbon neutral produced solid tyres. Carbon neutral production means that any CO2 released into the atmosphere during production is balanced by an equivalent amount being removed. We're passionate and committed to improve our production methods, therefore we keep on investing in our production facilities.

Using Magna solid tyres on your forklift is making the greener choice without sacrificing on tyre performance. An easy step into shaping a greener future for your logistical operation.



## The New MA610<sup>PRO3</sup>.

Pioneering Performance and Durability.

Revolutionizing Lift  
Magna Tyres Unveils MA610 PRO3 –  
The Ultimate Heavy-Duty Tyre for Forklift  
Excellence.

Introducing the MA610 PRO3, your forklift's  
ultimate companion in performance and  
longevity. Crafted with precision and  
innovation, this tyre is engineered to  
redefine your forklift experience.



## Operating 24/7

Special made for non stop shifts.



### High Durability.

Unrivaled durability defines  
our tyre—engineered  
for longevity, reliability,  
and enduring strength,  
ensuring a smooth and  
enduring journey  
anywhere.



### Excellent traction.

Unleash forklift potential  
with our ultimate tyre  
pattern—engineered for  
unparalleled traction,  
stability, and efficiency,  
ensuring optimal  
performance in every  
operation.



### Exceptional Mileage.

Crafted with precision, our solid tyre's  
compound integrates resilient rubber  
molecules, meticulously bonded  
for enhanced strength, durability,  
and optimal performance—  
engineered for reliability  
on every road.





# Construction & Agro-Industrial tyres.





# Construction Agro-Industrial Tyres.



## M-SKID 2

5.70-12    12-16.5  
23x8.5-12    14-17.5  
27x8.5-15    15-19.5  
10-16.5    445/65-22.5



## M-SKID 4

10-16.5    14-17.5  
12-16.5    15-19.5



## MR400

340/80R18  
460/70R24    400/80R24  
500/70R24    440/80R24  
540/70R24    440/80R28  
400/70R24    480/80R26



## MA11 E2/L2

365/70R18  
405/70R28  
405/70R20



## MB400 IND

10.5/80-18  
12.5/80-18



## MB250 IND

15.5/80-24



## MB410 IND

17.5L-24    16.9-24  
19.5L-24    16.9-28  
18.4-26



## MB260 IND

405/70-20  
405/70-24



## MB100

10.00-20



## MB720 IND

23.1-26



## MR500 IND

460/70R24



## MB210

13.00-24  
14.00-24  
16.00-24

# Magna TPMS Fleet Solutions System



# Value Proposition.

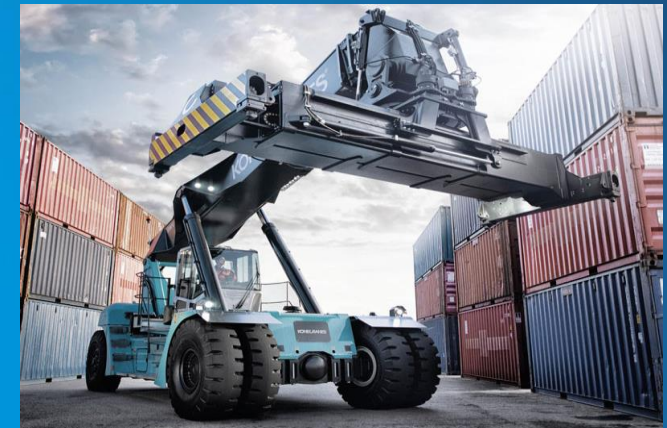
- Safety – employees/work environment & the load being transported.
- Fuel efficiency – running at optimum set-up.
- Asset Management – getting the best from your assets.
- Security – alert if a vehicle is stolen or unauthorised movement, tracking.
- Meeting legal requirements – highlighting potential problems.
- Resource management – right people in the right places.
- Fleet efficiency – meeting deadlines.
- Journey health & Pro-active maintenance – highlighting anomalies early and initiating corrective action.
- Fleet Decarbonisation - mitigating climate change, improving air quality, enhancing energy security, saving costs, and complying with regulations.





# Markets.

- Any machine or vehicle
- Any tyre size or type
- Any machine manufacturer



No limitations on number of tyres.

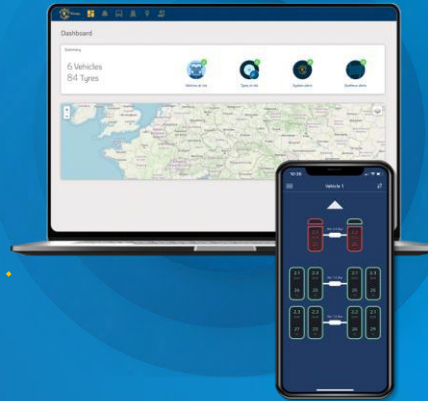


# Key Magna TPMS Components.



## TPMS Sensor

- On-Valve Sensor
- Standard & Large Bore
- No need to remove tyre



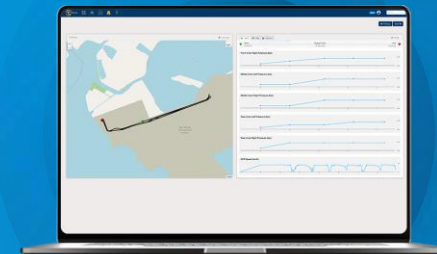
## Mobile App & Desktop

- Helps diagnose any problems
- Easy to configure parameters
- Easy to set up
- Alerts 'on-the-go'



## Magna Gateway

- Flexible Hardware with multiple I/O capability
- Cellular/GPS/Bluetooth
- Battery Backed



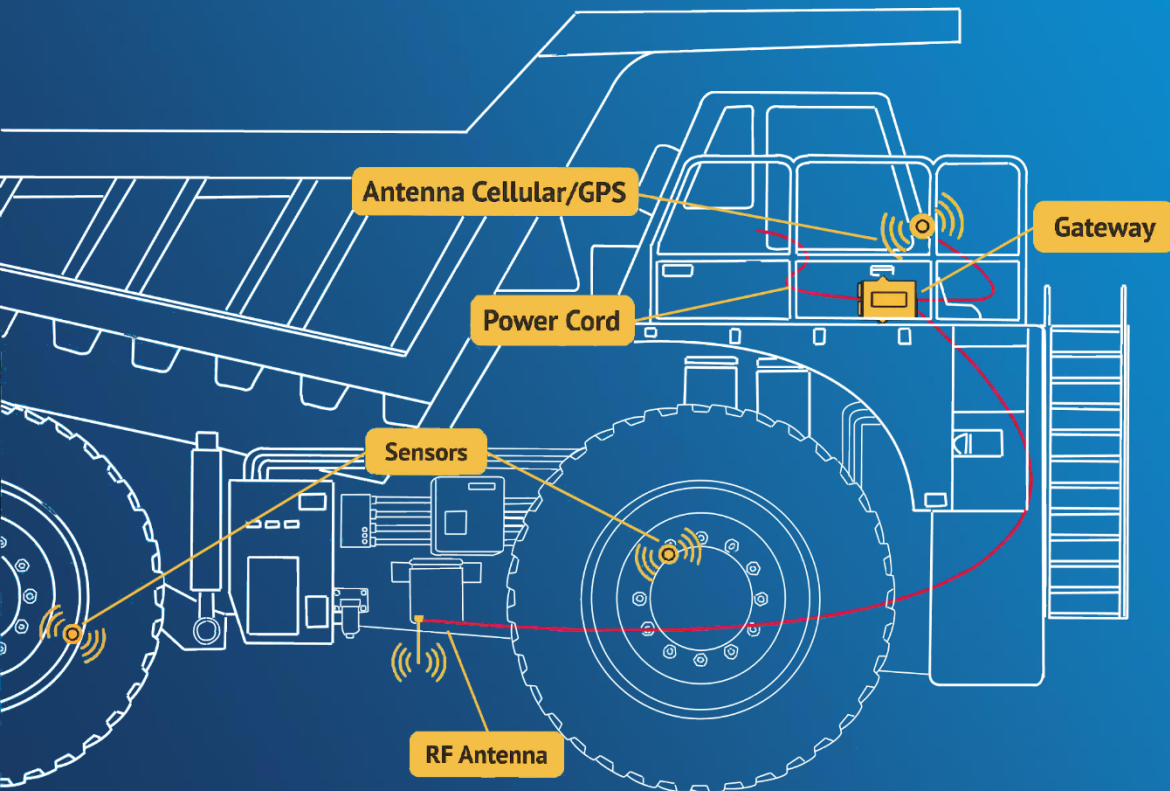
## Reports

- Tyre reports
- Mileage
- Hours
- Journeys
- Problems



# Easy to Install.

*30 – 60 minutes depending on the complexity of the vehicle or machine*



Revolutionary through simplicity. MAGNA TPMS was designed to be as “plug & play” and universal as possible, allowing it to be installed in a large variety of vehicles in under an hour.

This reduces the downtime for installing significantly.

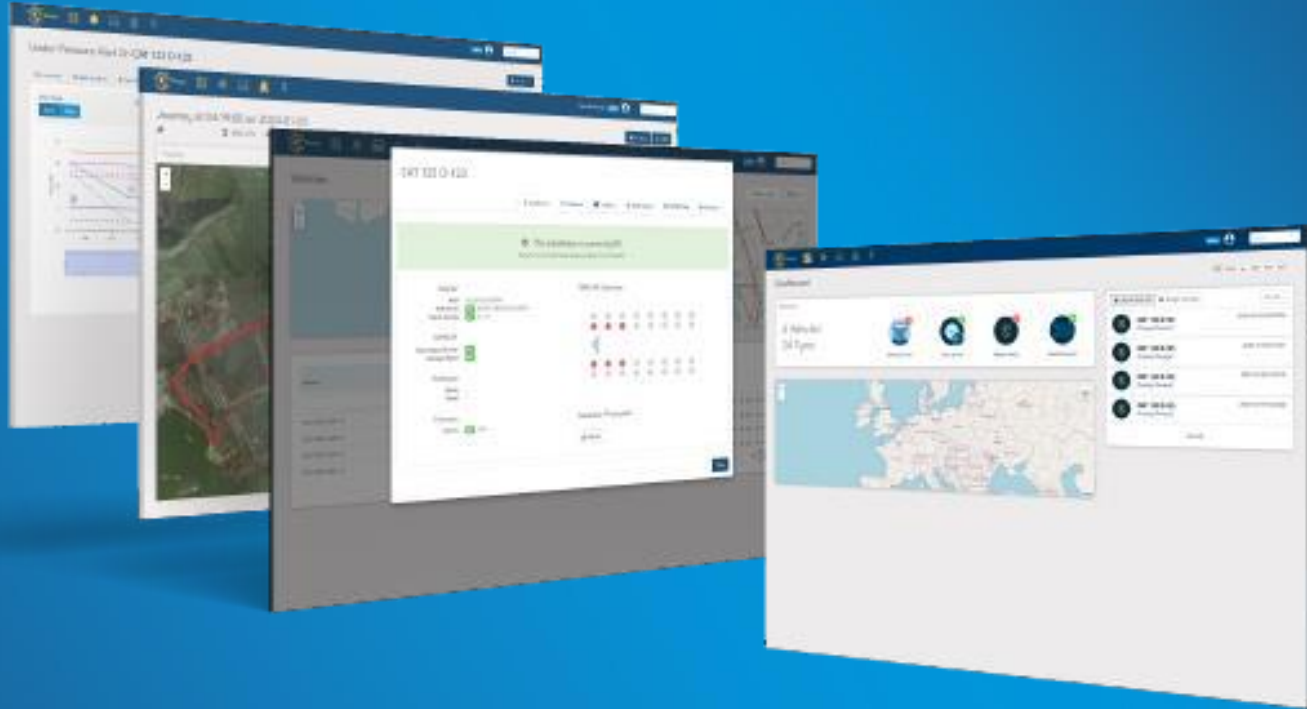
- Easy Install – No need to remove tyres
- Pre-programed for your vehicle(s)
- Simple Set-up





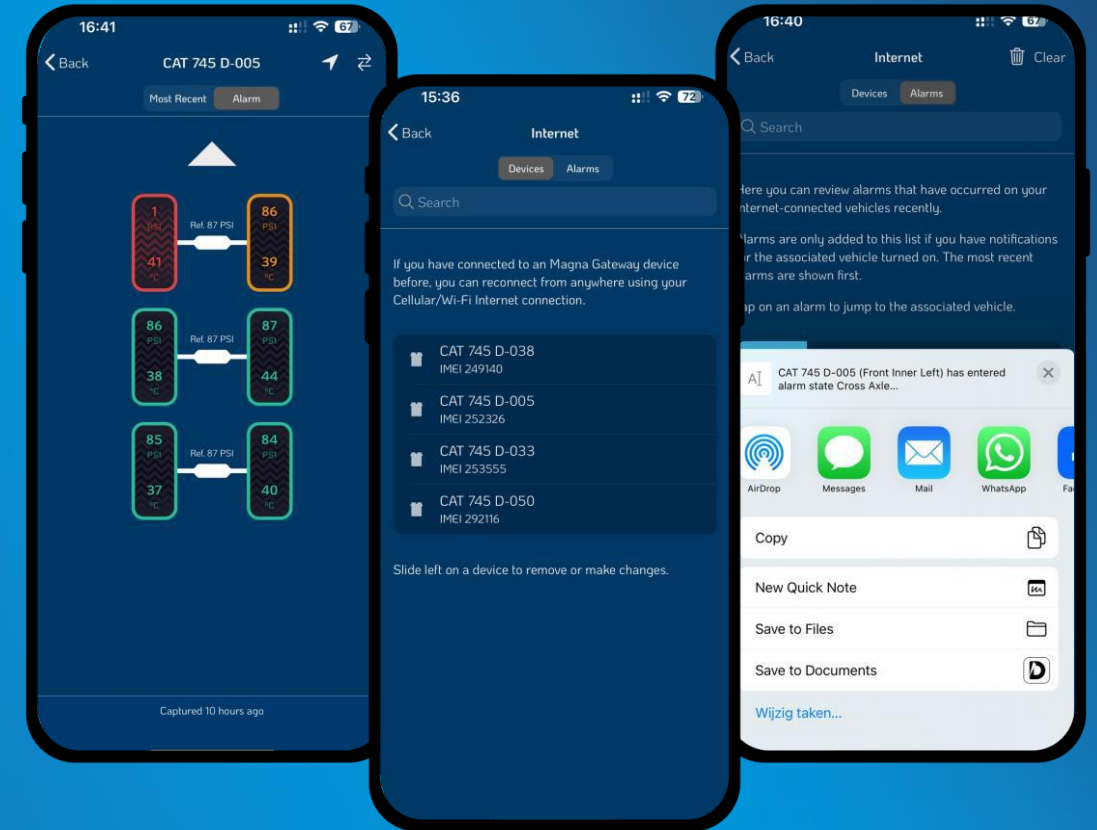
# Data Insight – Web Application.

- Dashboard – By exception
- Alert highlighted immediately
- Every vehicle & tyre information
- Authentic Data, Real Impact
- Drill down into tyre behaviour
- Detailed Journey Analysis
- Detailed Reports
- Available in 12 languages



# Data Insight – Mobile App & Alerts.

- View TPMS data on any vehicle (authorised)
- Received detailed alerts via Notification Centre on smartphone
- Take immediate action
- Monitoring and sharing alerts 'on-the-go'
- Every vehicle & tyre information
- Email with full interactive links to web application

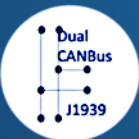


# Much more than TPMS.

- Tyre Pressures even when vehicle unpowered
- Tracking even when vehicle unpowered
- Know if the vehicle has moved
- Security in accordance with Thatcham S5
- Engine characteristics and fault codes
- Usage statistics to support service contracts



Multiple Sensor Inputs  
OEM Customisation



• TPMS



• Battery Backed



• Tracking



• Security



• Axle Load



• Engine Monitoring



• Wheel loss



• Hub/Brake Temp



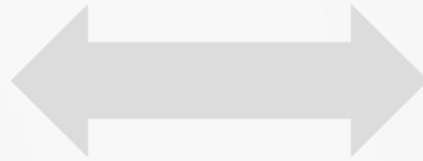


# Summary.

- It works! – “Our biggest competition is failed systems”
- Any machine, any tyre, any manufacturer
- Easy to install, easy to use at an affordable price
- Competitive “cost of ownership” – hardware, subscription, install, maintenance
- First year subscription free of charge courtesy of Magna Tyres
- ROI less than 12 months



# SERVICE OF COMPLETE WHEEL ASSEMBLY



# Survey comments from Customers

**No Nonsense  
mentality**

**Best of  
the rest**

**Always on**

**Dutch /  
European  
origin**

**Value  
for money**

**Family owned  
company**

**Personal  
connection**

**Core Business**  
OTR  
Industrial





# Takk for oppmerksomheten!



***- Norges største uavhengige dekkgrossist***

